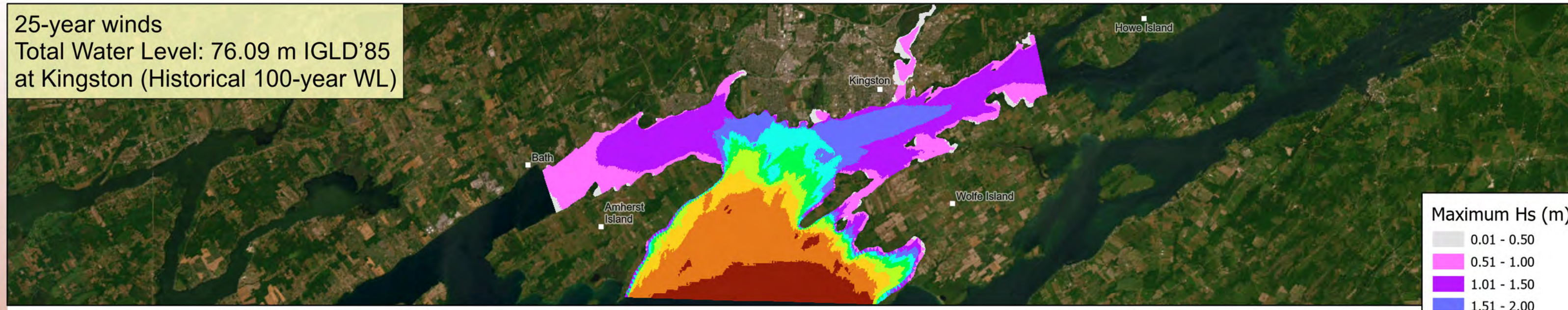


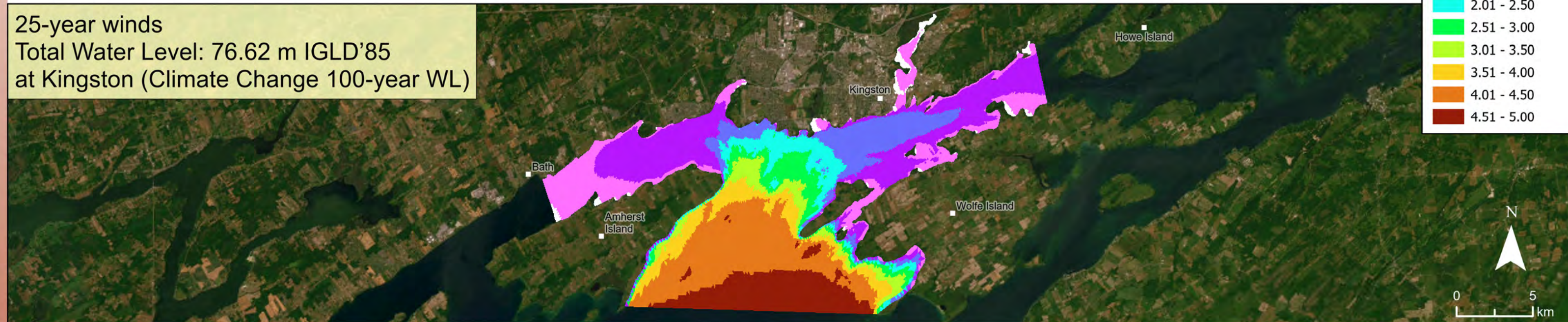
# WAVE MODELLING

## Kingston Waterfront Wind Waves

25-year winds  
Total Water Level: 76.09 m IGLD'85  
at Kingston (Historical 100-year WL)

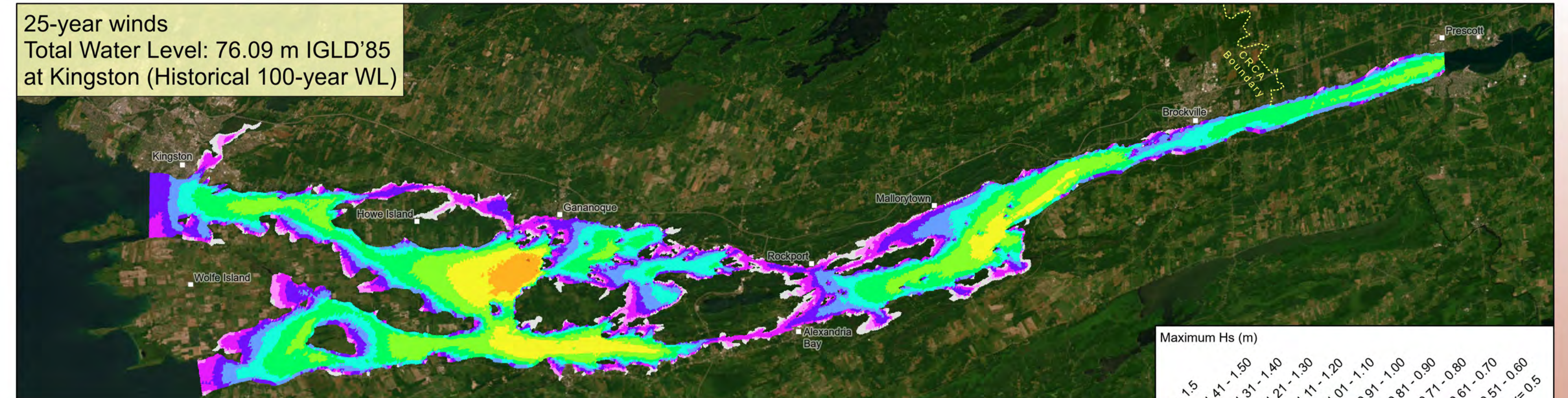


25-year winds  
Total Water Level: 76.62 m IGLD'85  
at Kingston (Climate Change 100-year WL)

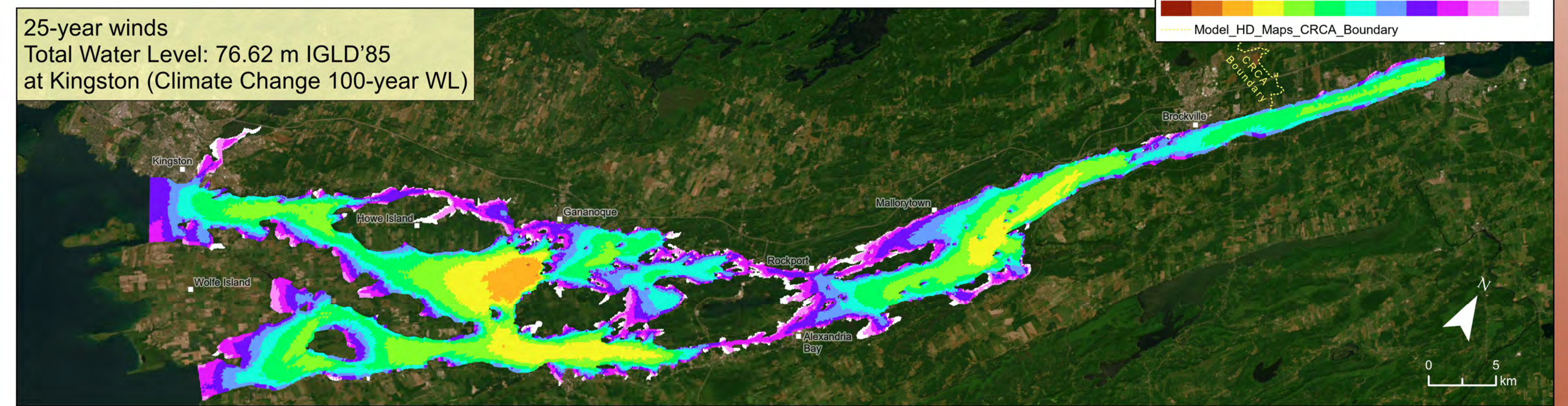


## St. Lawrence Wind Waves

25-year winds  
Total Water Level: 76.09 m IGLD'85  
at Kingston (Historical 100-year WL)

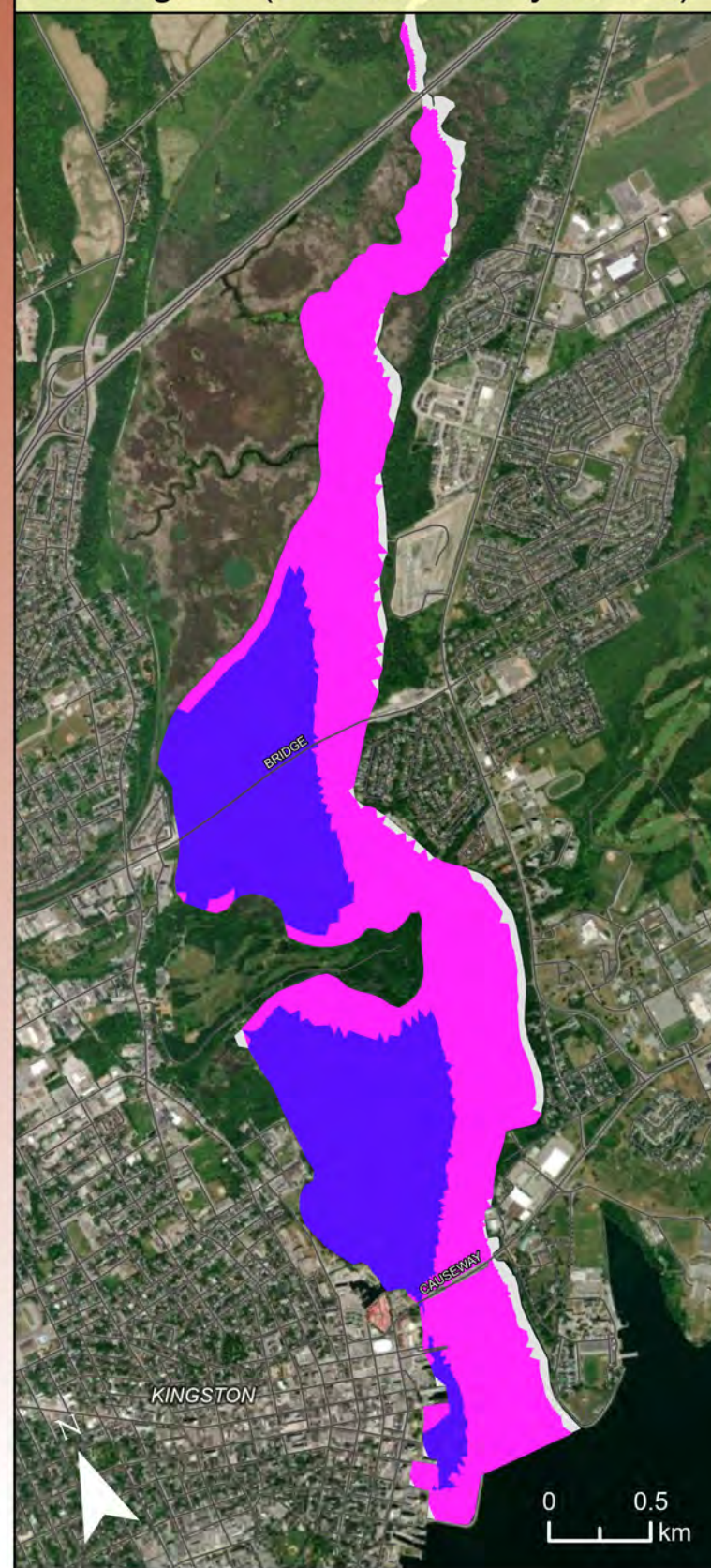


25-year winds  
Total Water Level: 76.62 m IGLD'85  
at Kingston (Climate Change 100-year WL)

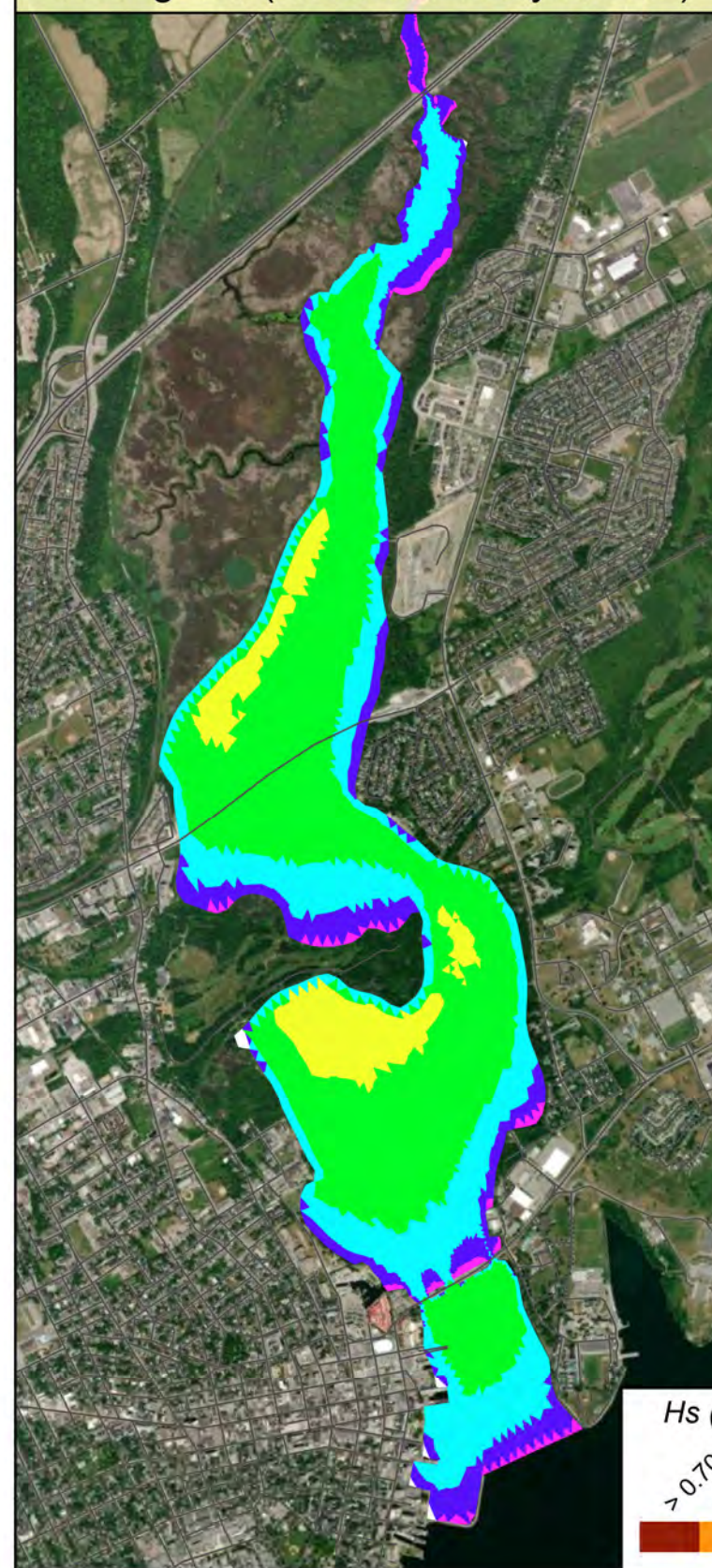


## Catarqui River Wind Waves

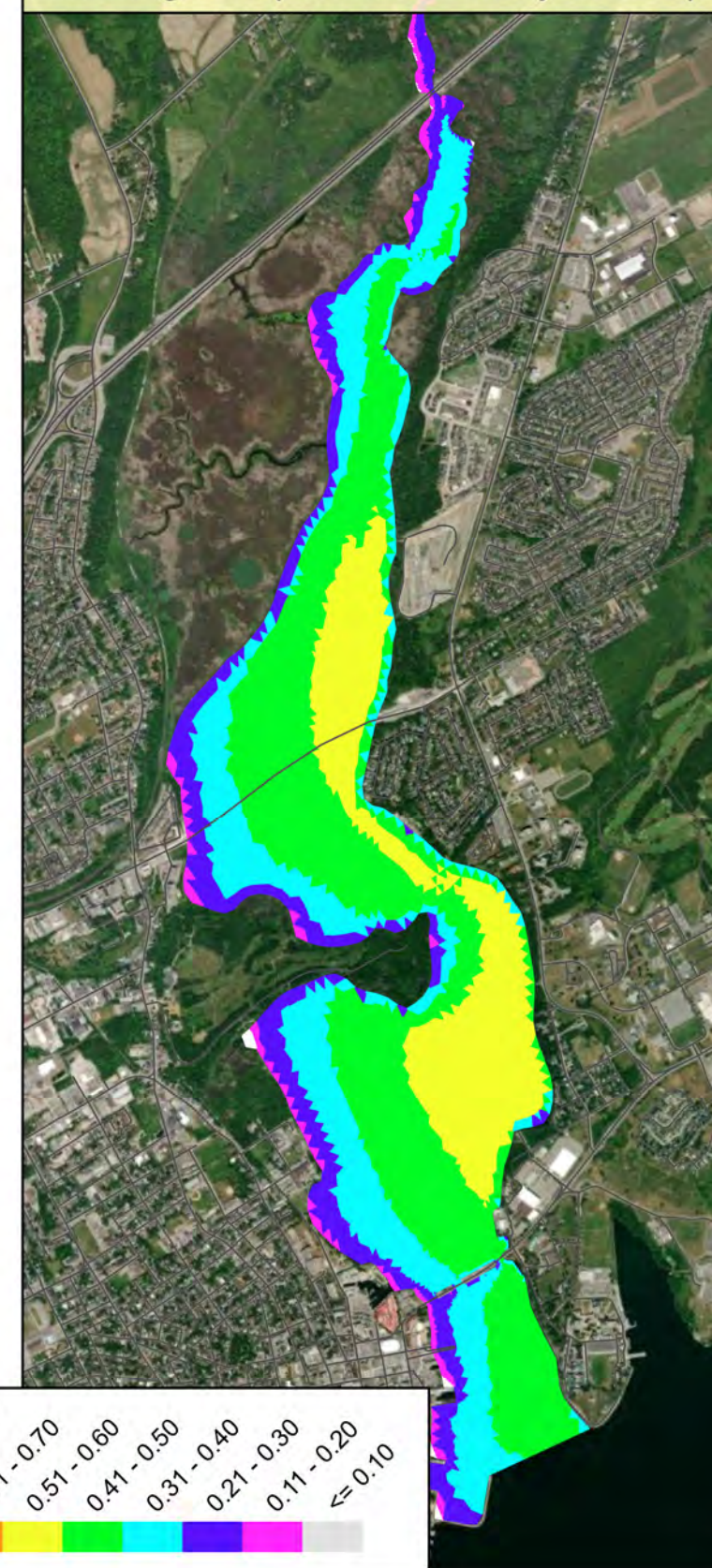
Run 1: 25-year winds from 90°  
Total Water Level: 76.09 m IGLD'85  
at Kingston (Historical 100-year WL)



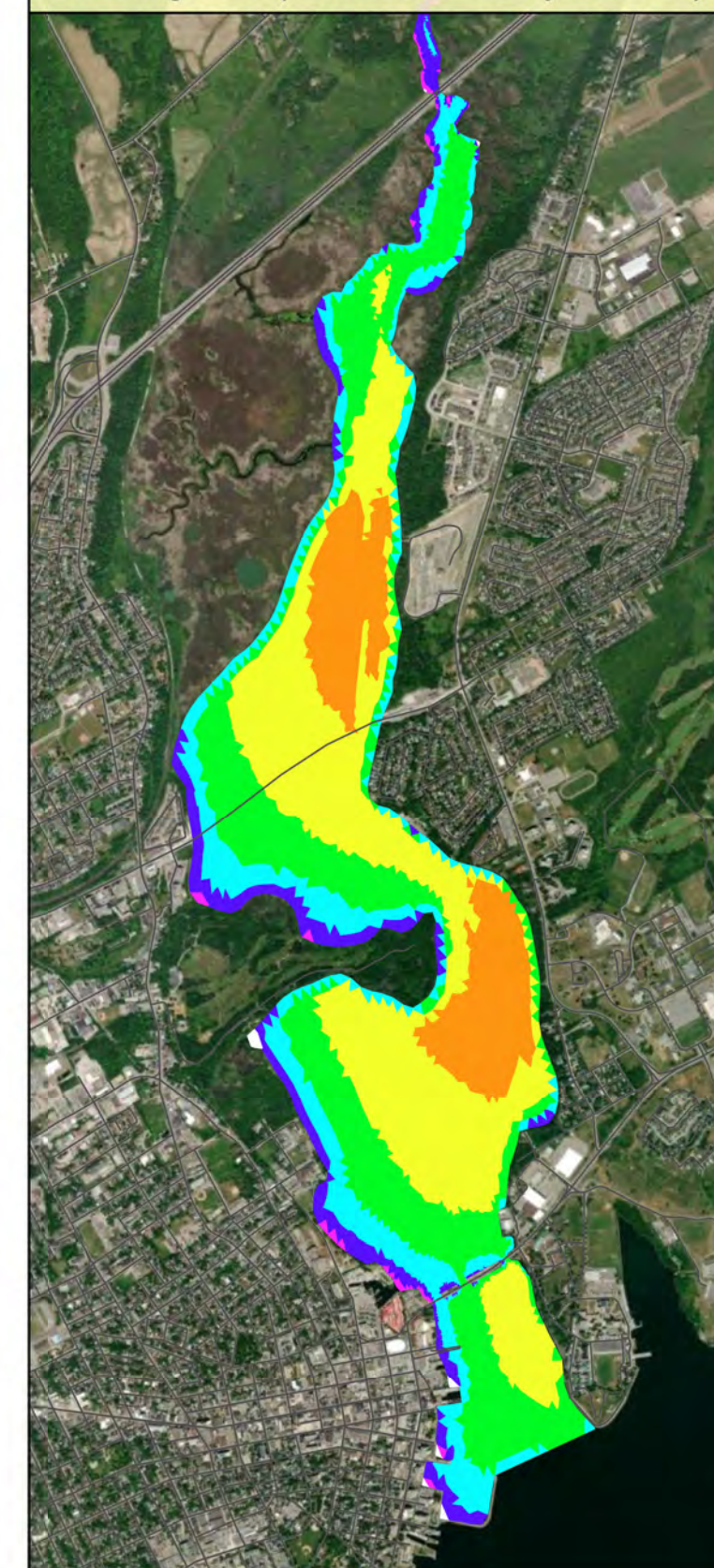
Run 2: 25-year winds from 180°  
Total Water Level: 76.09 m IGLD'85  
at Kingston (Historical 100-year WL)



Run 3: 25-year winds from 270°  
Total Water Level: 76.09 m IGLD'85  
at Kingston (Historical 100-year WL)

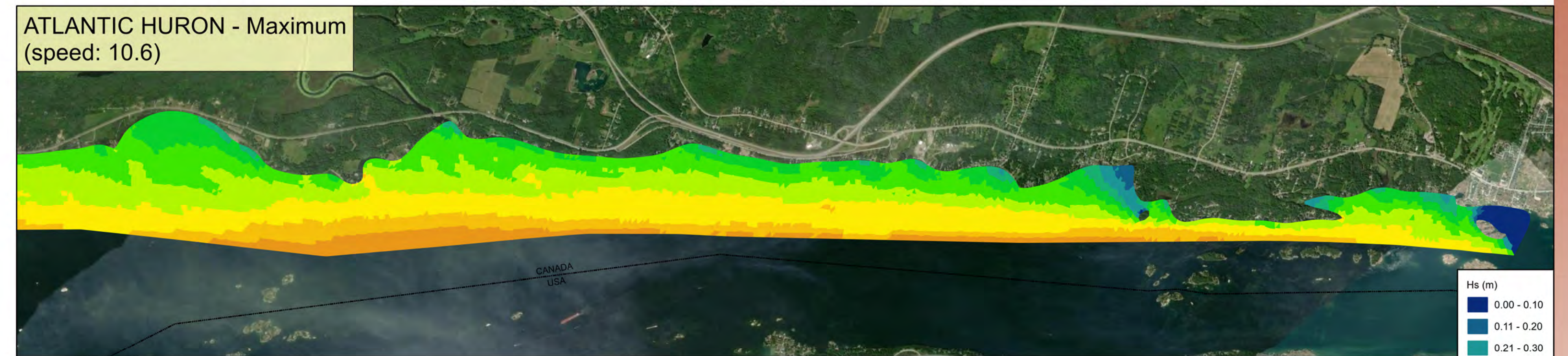


Run 4: 25-year winds from 240°  
Total Water Level: 76.09 m IGLD'85  
at Kingston (Historical 100-year WL)



## St. Lawrence River Ship Wakes

ATLANTIC HURON - Maximum  
(speed: 10.6)



OAKGLEN - Maximum  
(speed: 12.3)

