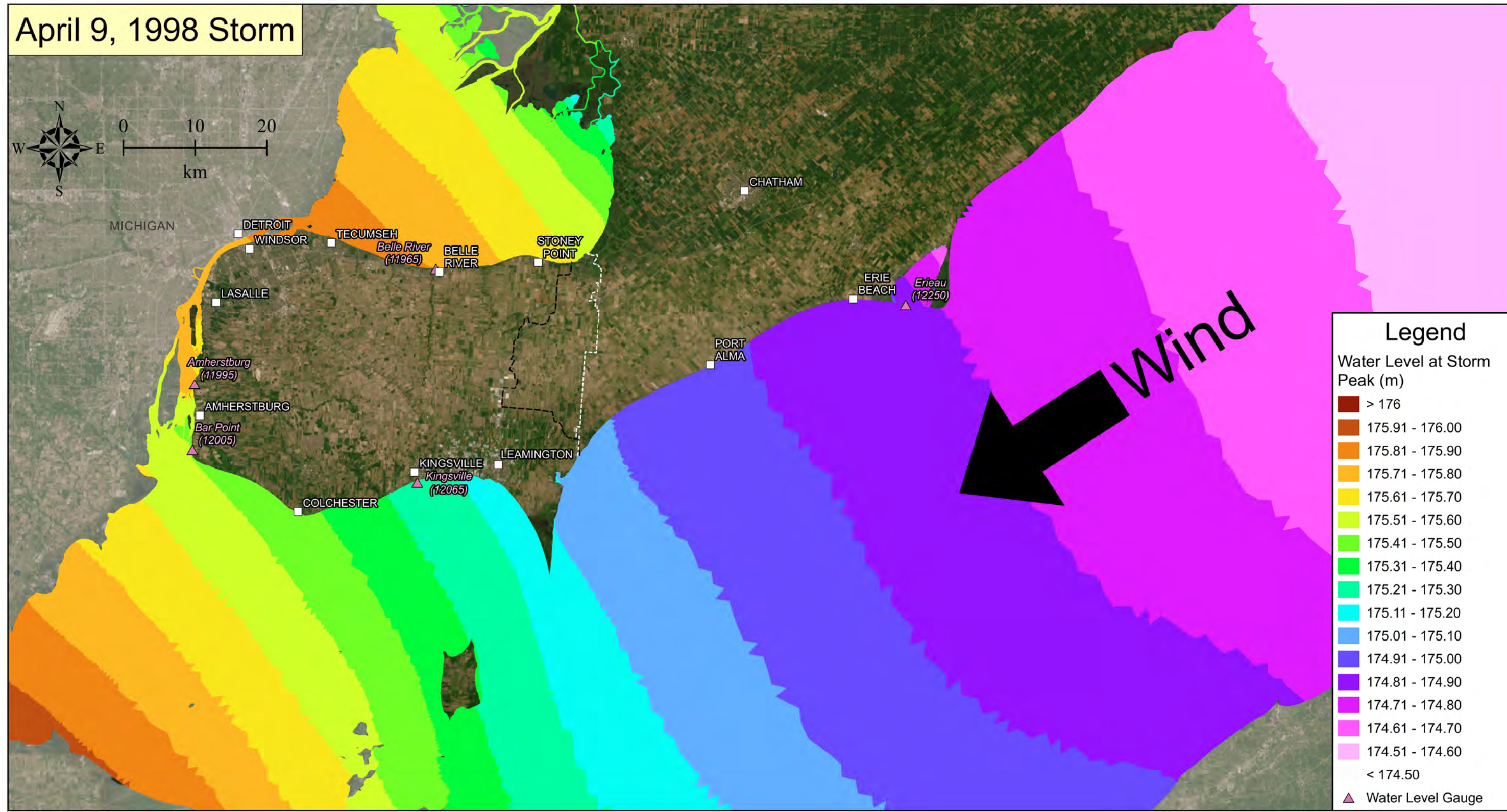


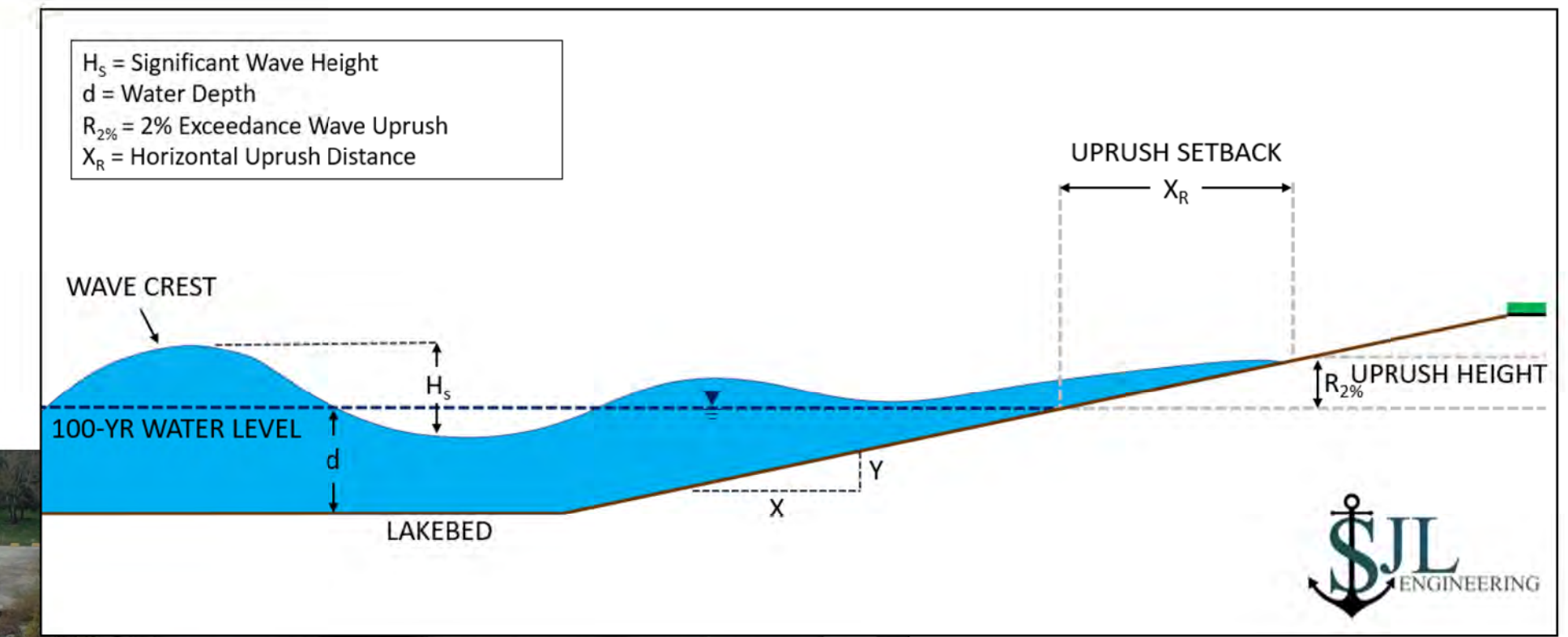
STORM SURGE AND WAVE EFFECTS

Strong Winds from the Northeast Push Water Southwest Resulting in Storm Surge

April 9, 1998 Storm

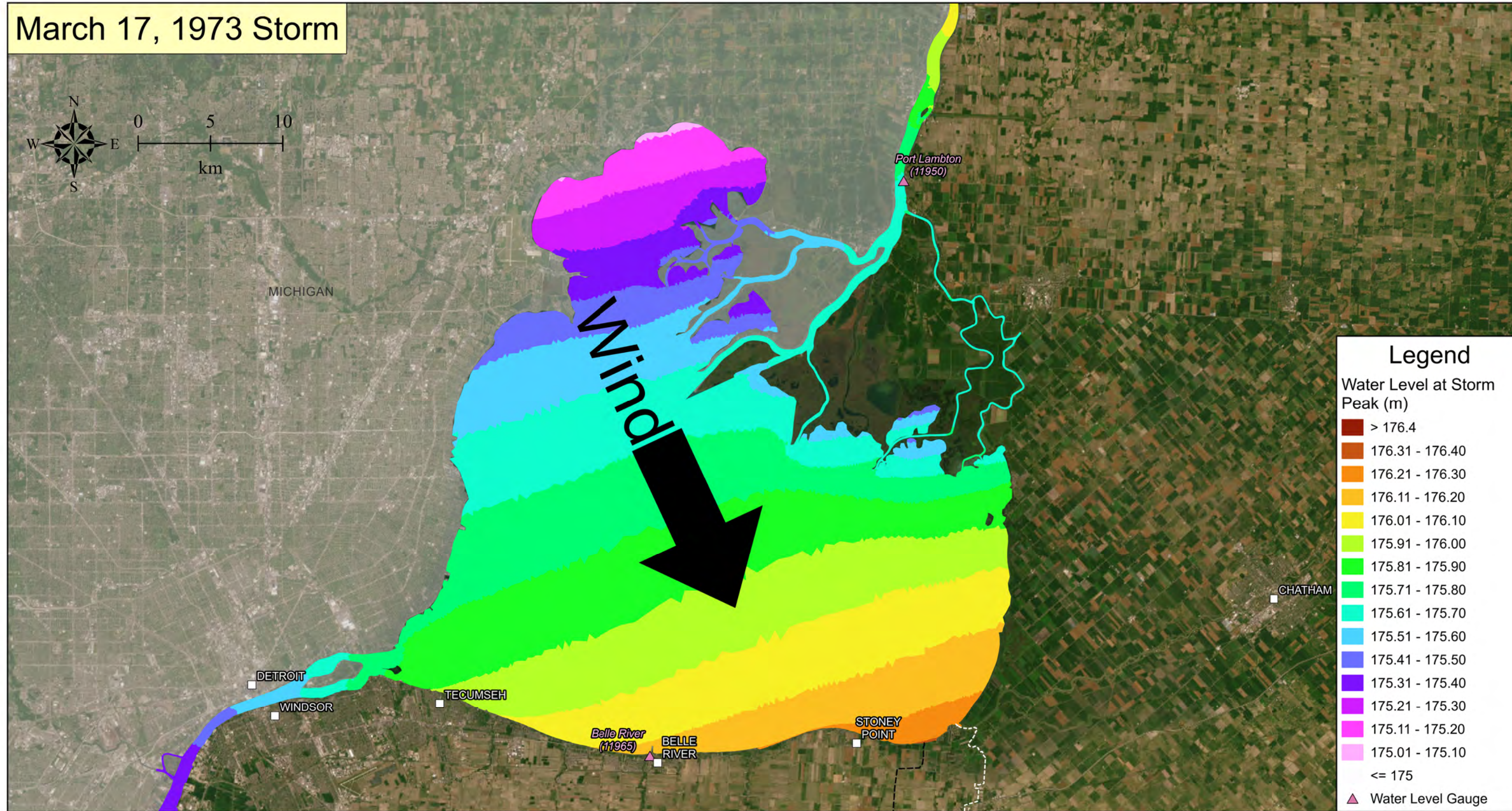


Wave Uprush on a Gentle Slope



Strong Winds from the Northwest Push Water Southeast Resulting in Storm Surge

March 17, 1973 Storm



Wave Overtopping of a Bank or Shore Protection

