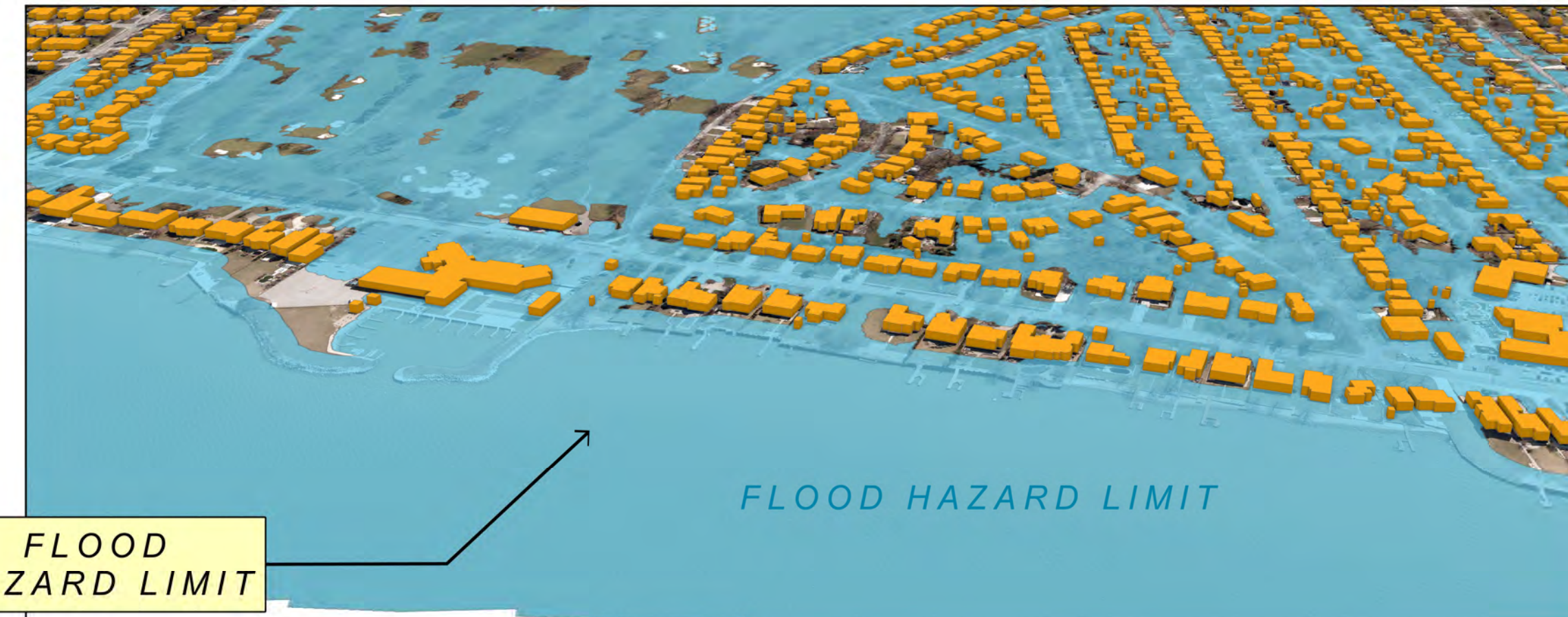
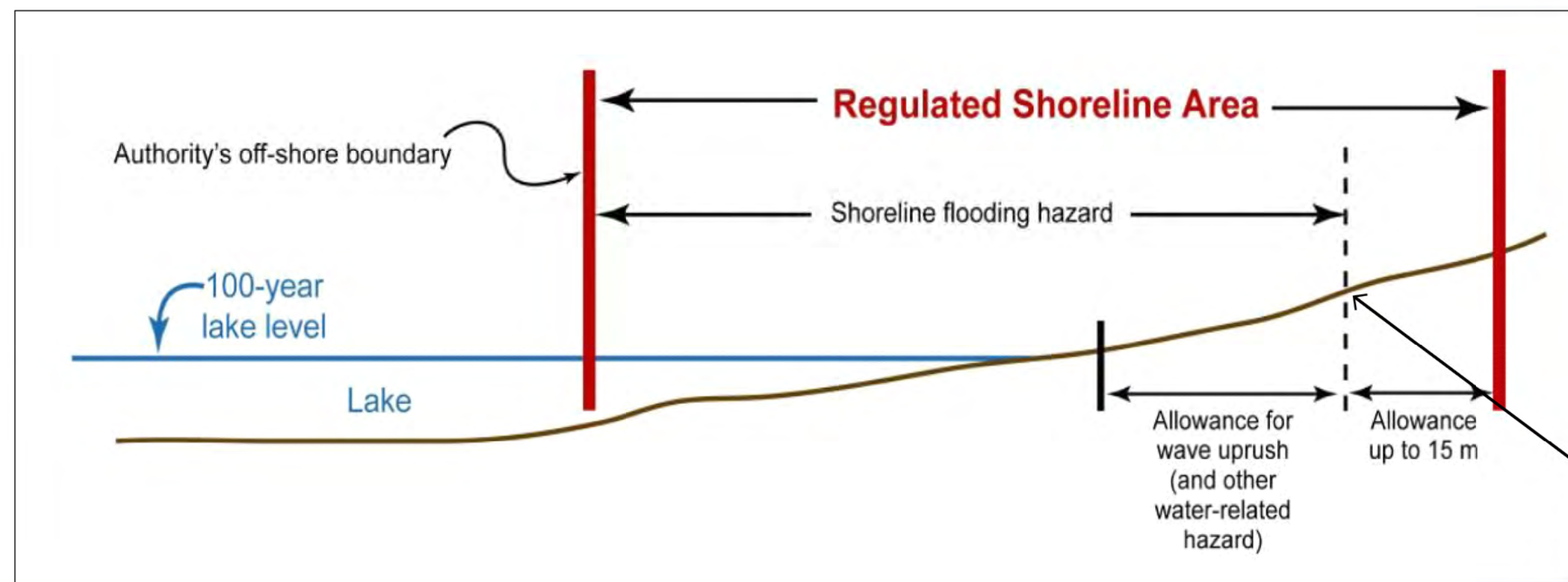


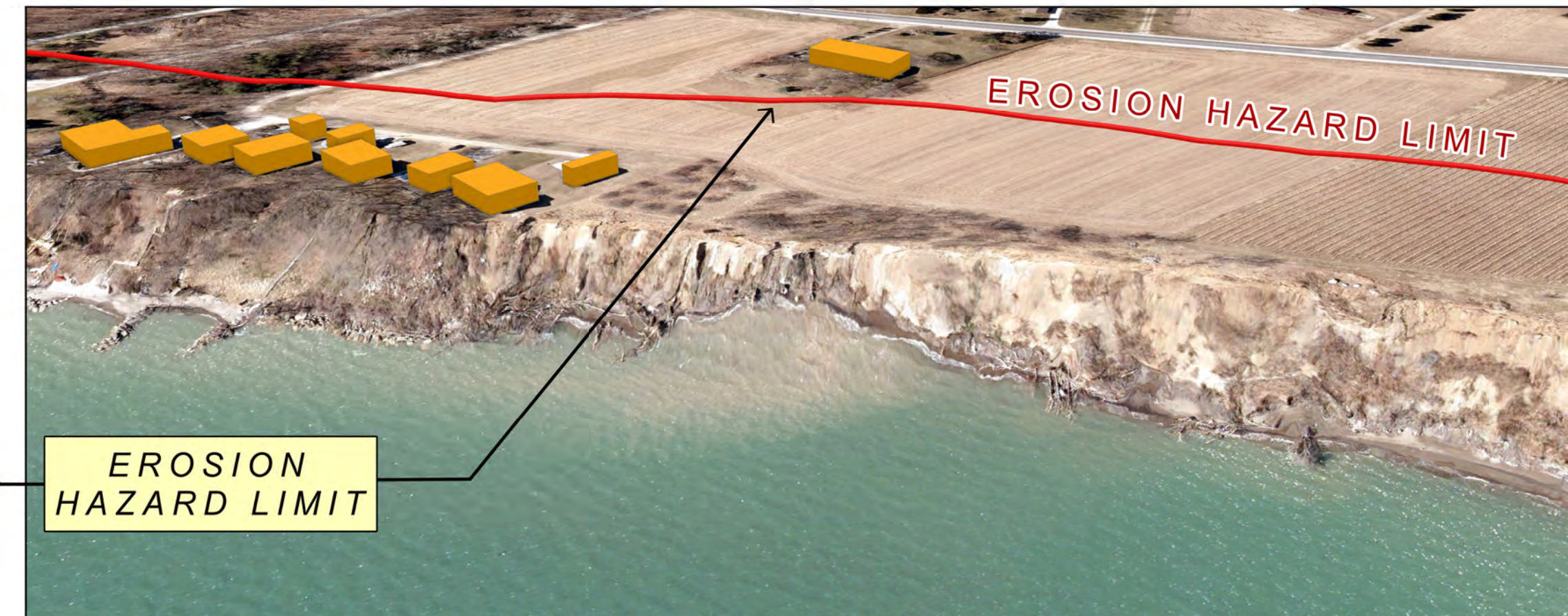
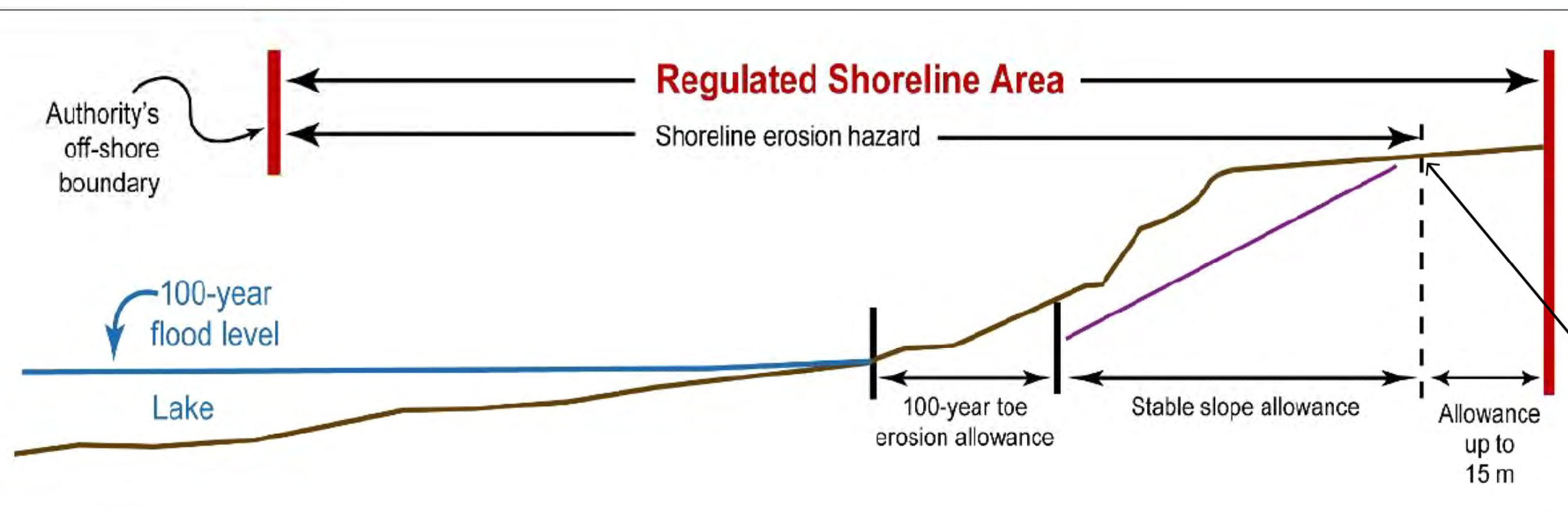
# SHORELINE NATURAL HAZARD MAPPING DEFINITIONS

Natural hazards affecting Great Lakes shorelines are defined in the Technical Guidelines for Great Lakes – St. Lawrence River Shorelines (MNR, 2001) and the Guidelines for Developing Schedules in Regulated Areas (CO and MNR, 2005). The *Regulated Area* is determined by the greatest landward extend of the hazardous lands plus an additional allowance determined by the Authority (maximum 15 m).

## Flooding Hazard



## Erosion Hazard



## Dynamic Beach Hazard

