



Development of a Coastal Resilience Framework & Pelee Coastal Resilience Committee

**Pete Zuzek, Linda Mortsch, Larry Hildebrand
October 27, 2023**

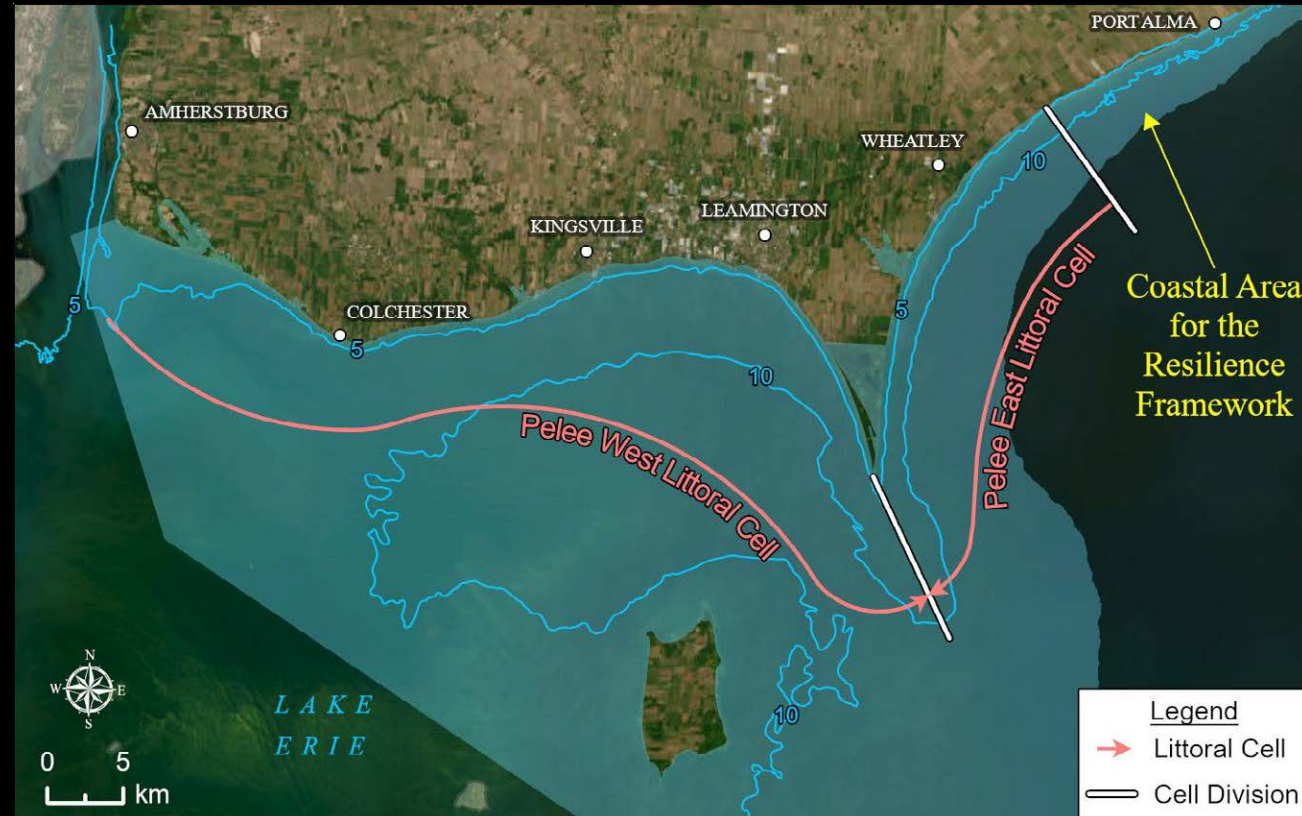


Agenda

- I. Welcome, Land Acknowledgement and Introductions
- II. Committee Name
- III. Resilience Definition
- IV. Review of Vision and Goals for Committee
- V. Governance
- VI. NRCan RFP
- VII. Next Steps



I – WELCOME, LAND ACKNOWLEDGEMENT AND INTRODUCTIONS





Land Acknowledgement

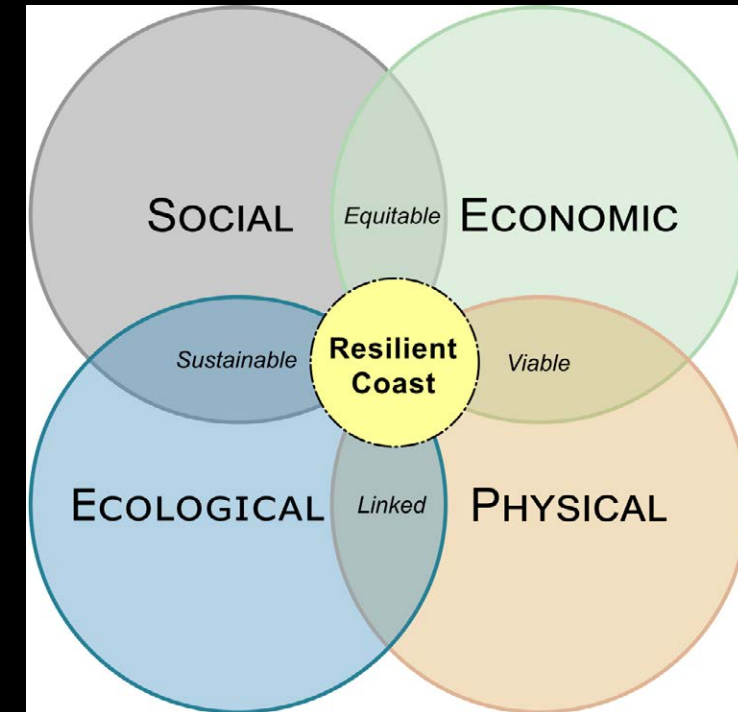
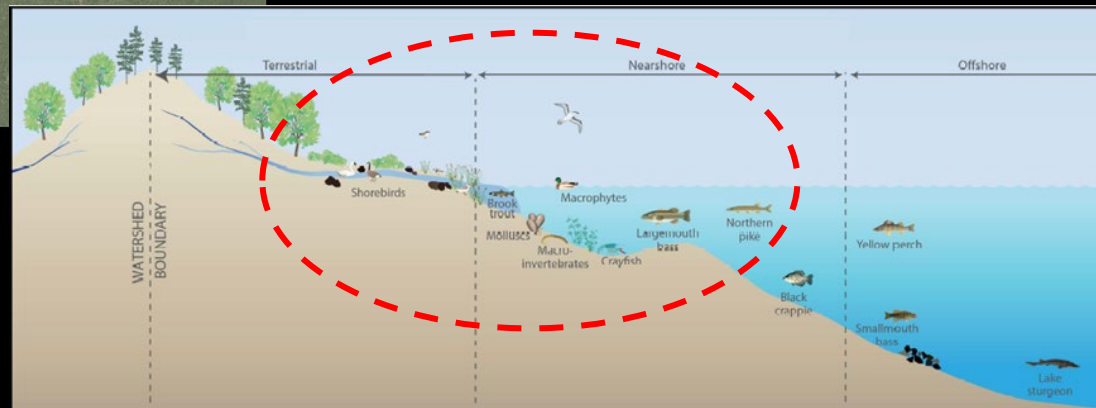
Point Pelee National Park is on the traditional territory of the Three Fires Confederacy of First Nations, comprised of the Ojibwa, the Odawa, and the Potawatomi, and represented by Walpole Island and Caldwell First Nations.

We acknowledge the caregivers of these lands and waters and all the moccasins that have travelled them over time.



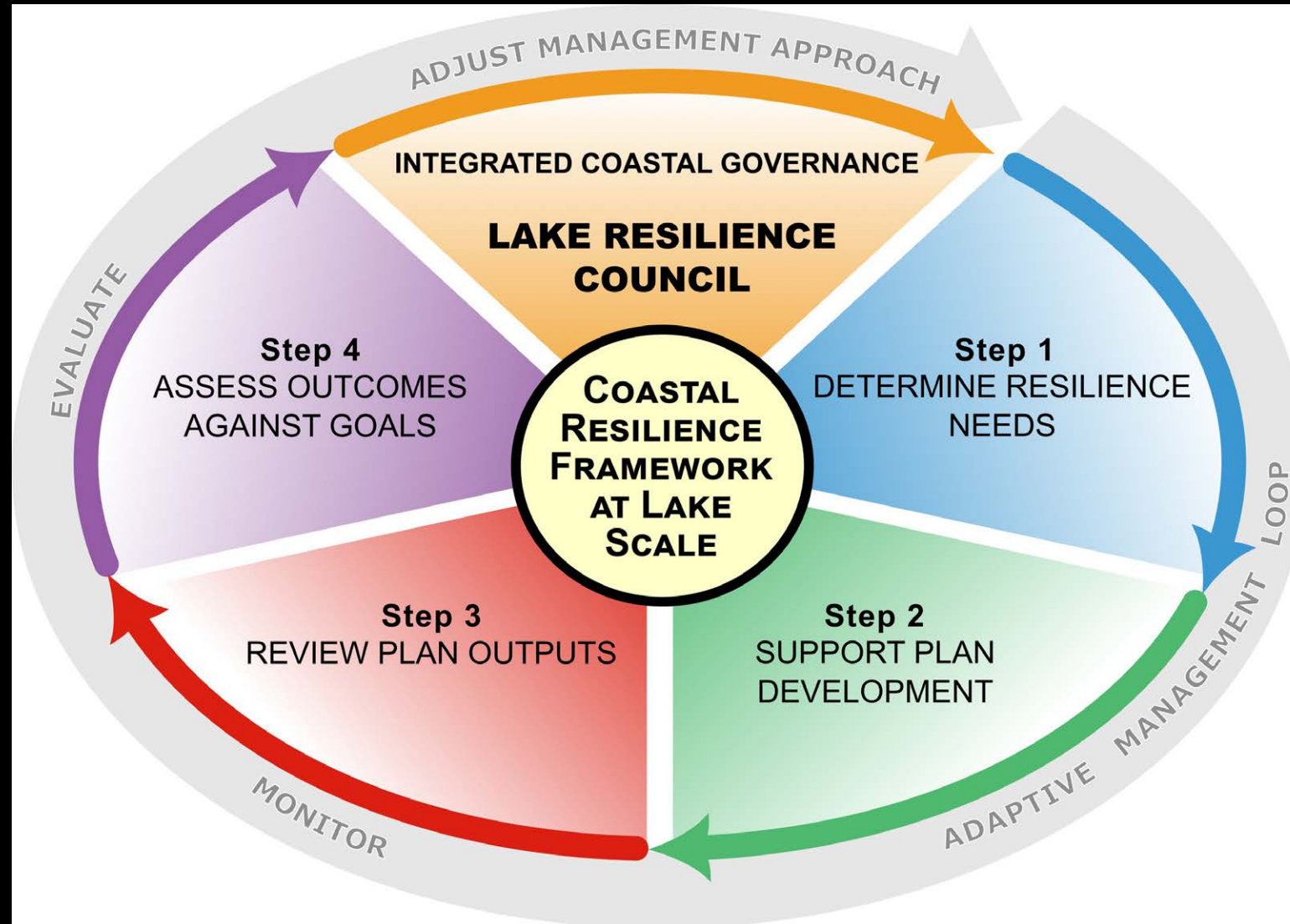
Key Aspects of the Framework

- The coastal area is an integrated social, economic, ecological, and physical system
- Scale is a defining aspect of the framework (littoral cells)
- All of society approach (by everyone for everyone)



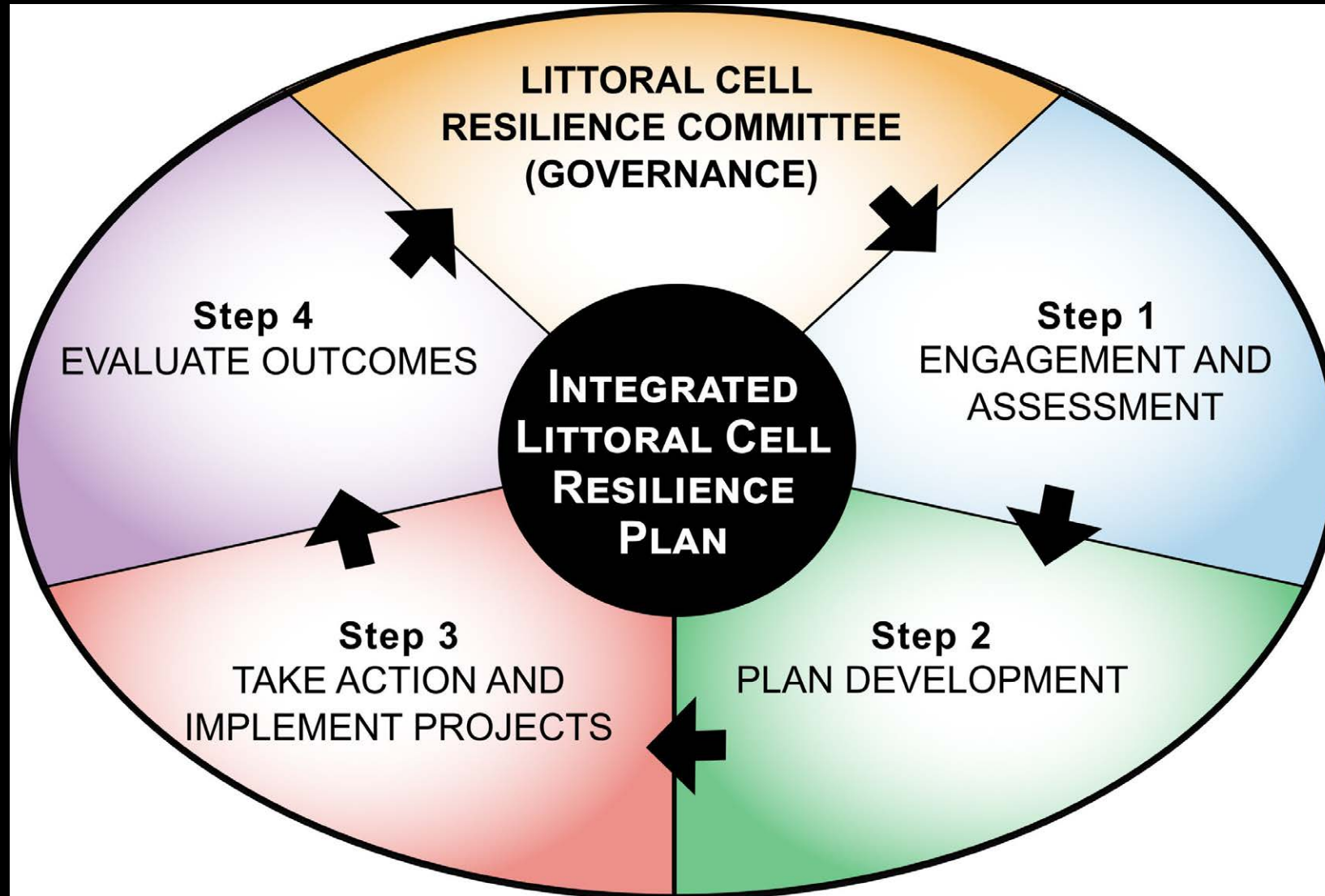


Lake Scale



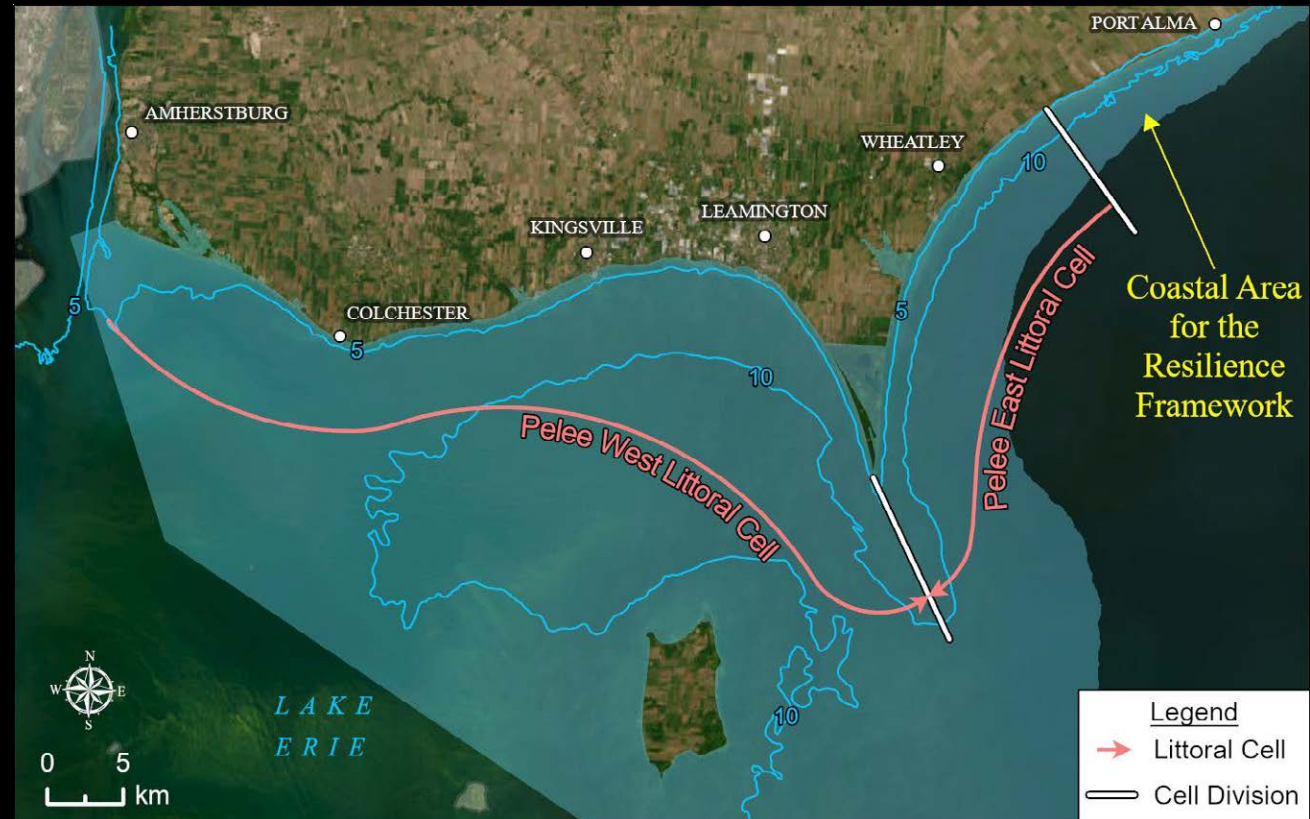


Littoral Cell Scale





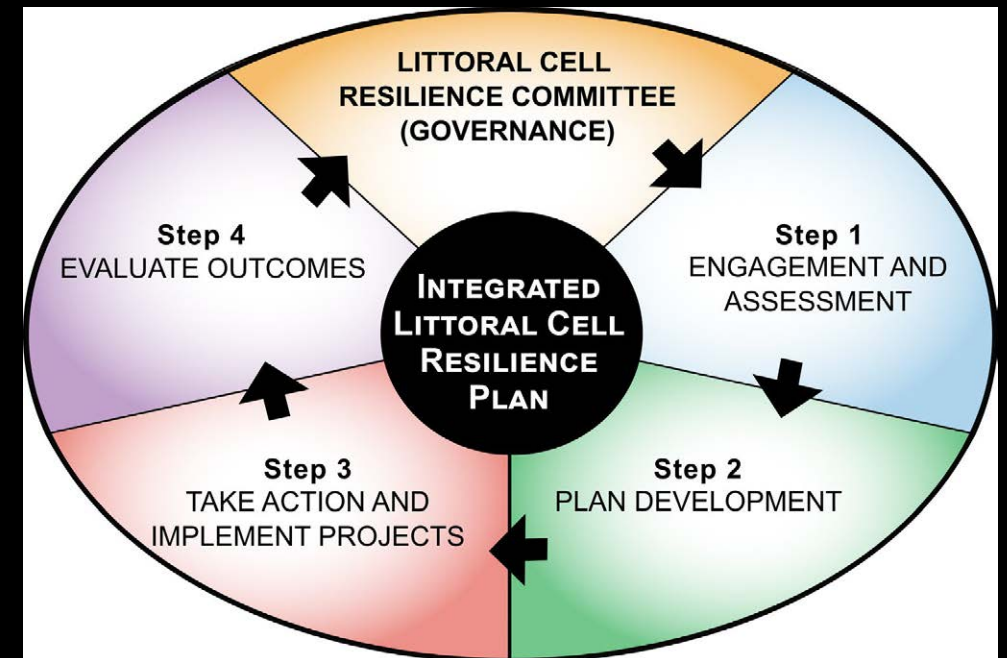
II – COMMITTEE NAME





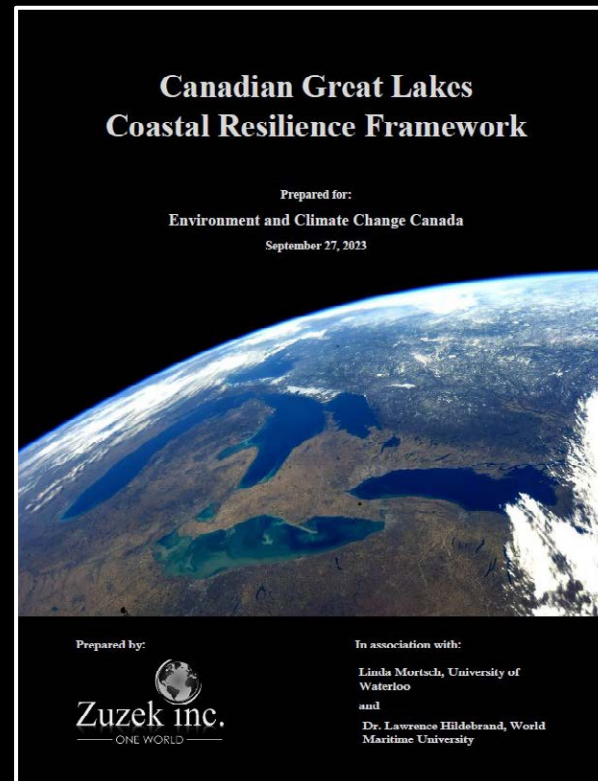
For Discussion

- Suggest: Pelee Coastal Resilience Committee
- Will develop a 'Pelee Littoral Cell Resilience Plan'





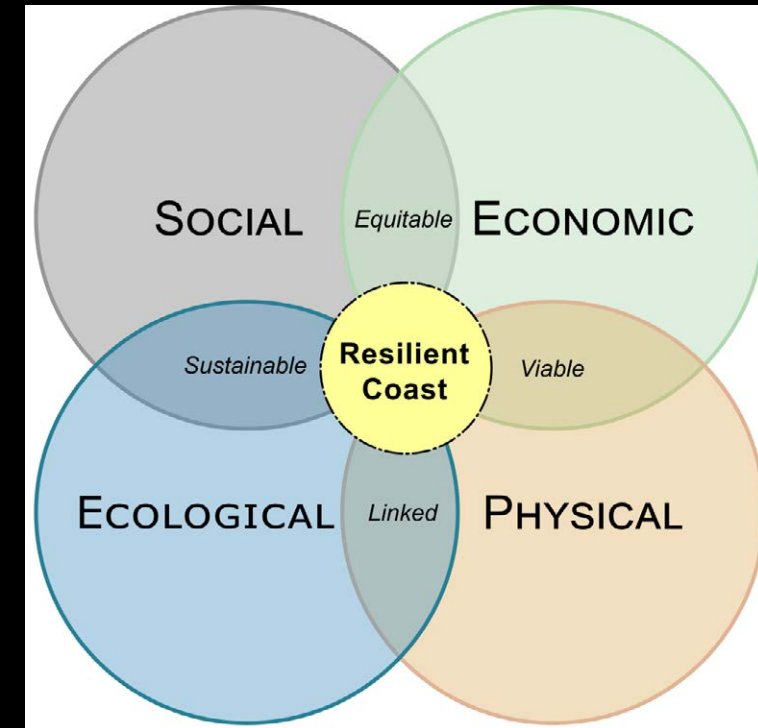
III – RESILIENCE DEFINITION





Resilience Definition from Framework Report

- [Coastal] Resilience is the capacity of social, economic, ecological, and physical systems in coastal areas to cope with a hazardous event, trend, or disturbance, responding and reorganizing in ways that maintain their essential function, identity, and structure, while also building capacity for learning, innovative and equitable adaptation, and transformation.
- A resilient coastal area features a healthy coastal environment that protects against current hazards, the impacts of climate change, and strives to maintain dynamic coastal processes





IV – REVIEW OF VISION AND GOALS FOR COMMITTEE





Context from the Resilience Framework document

- “Great Lakes coastal resilience ethos” ...
 - Coastal areas are dynamic, integrated social, economic, ecological, and physical systems
 - Systems perspective (nearshore to upland linked, littoral cell), scale matters, nested
 - “All-of-society-approach” includes stakeholders, landowners, rights holders, and federal, Indigenous, provincial, regional and municipal governments
 - Collaborating, co-creating, “by everyone for everyone”
 - INTEGRATION in coastal planning, management, coordination, stewardship, and investment
 - Capacity to respond to range of current and emerging/future challenges, stresses and threats



Vision from Resilience Framework document

- VISION ...
 - Promote resilient coastal areas through collaborative development of strategic plans at varying spatial scales and timeframes that respect the complex and interconnected nature of the coastal system, and in ways that empower partners



Discussion - Vision

- Does this VISION RESONATE with you and reflect our intent (set in context)?
 - Is it appropriate for the Pelee Littoral Cells?
 - Are changes needed to reflect local values and conditions?



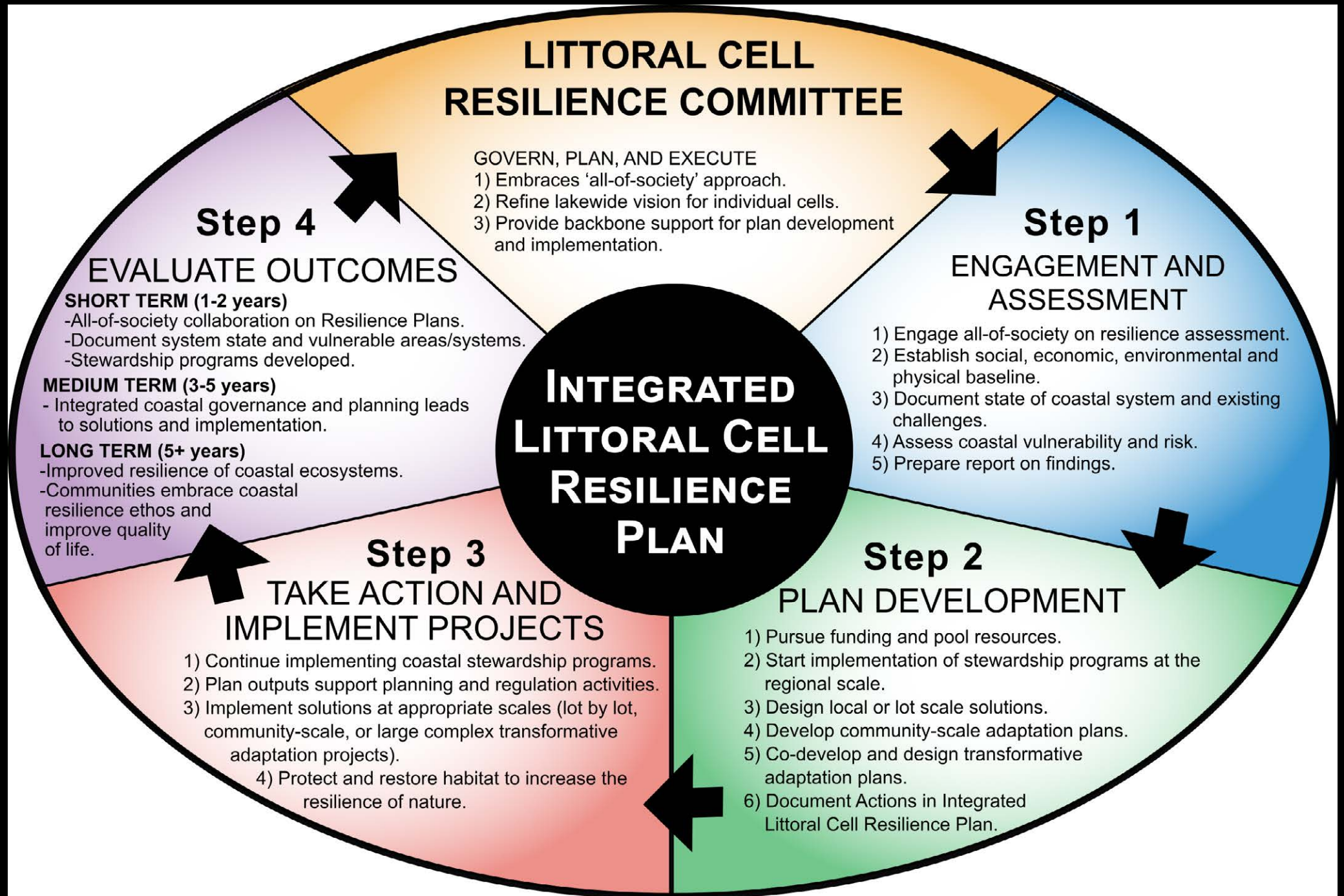
Goals from Resilience Framework document

- GOALS ...
 - Promote integrated coastal governance through the development of Lake Resilience Councils for each lake. [Whole lake scale and initiatives]
 - Develop integrated resilience plans for littoral cells, or another appropriate management unit, with an all-of-society approach to increase resilience of communities and ecosystems to coastal hazards and climate change.
 - Provide opportunities for knowledge transfer including western science and Indigenous Traditional Knowledge (with their free and prior and informed consent), to further resilience planning and prioritize knowledge gaps to provide direction for future research.
 - Promote and encourage implementation of adaptation projects at varying scales, including lot or parcel level, community to regional scale, and transformative projects



Discussion - Goals

- Are the Goals applicable and reasonable for the Pelee Coastal Area to guide the process?
 - Are changes needed to reflect local values and conditions?





Governance Discussion

- Committee Chairs for Remainder of the FY: Pete Zuzek and James Knott
- Future Governance Structure (what is needed):
 - Committee insights will inform further development of the Resilience Framework
 - Rotating Chair?
 - Website?
 - <https://zuzekinc.com/resilienceframework/>
 - Communications Protocol (e.g., local media)



VI – NRCAN RFP CLIMATE RESILIENCE COASTAL COMMUNITIES



Overview

Climate-Resilient Coastal Communities (CRCC) Program

- Call for Proposals

September 2023

Version française à suivre



Ressources naturelles
Canada

Natural Resources
Canada

Canada



Path Forward for Submission

- Due December 13th, 2023
- Zuzek Inc. will lead the submission
- Summary of call with NRCAN (19th Oct.)
- Target for matching funds is approximately \$300k
- Plus, in-kind support from non-federal members will also be included
- A template for a Letter of Support will be circulated
- Questions



VII – NEXT STEPS





Schedule of Future Activities

- Planned Meetings:
 - November 24 ,2023
 - January 26, 2023
 - February 23, 2023

- NRCan submission:
 - Due December 13, 2023
 - Draft workplan and budget near end of November
 - Draft written submission by early December 2023
 - Submitted on December 12, 2023



MEETING ADJOURNED

